

Bayloc™ Dry Disconnects

Adapter x Female NPT

Applications:

- compatible with most cam and groove style dry disconnects
- helps prevent spillage from normal or accidental disconnects
- for use in transfer of hazardous fluids

Features:

- two-piece adapter design for easy rebuilding of adapters
- fully interchangeable with Kamvalok (OPW trademark) style fittings
- for pressure ratings at other temperatures, contact Dixon®
- contact Dixon® at 800.355.1991 for chemical compatibility, size, material selection and special configurations
- spring loaded sealing device snaps closed should valve become disconnected with the poppet open

Female NPT	Adapter Size	Seal Material	Maximum PSI at 70°F (21°C)	Aluminum Part #	Stainless Steel Part #
1½"	2"	<i>Buna</i>	210	<i>DBA11-150</i>	<i>DBA71-150</i>
2"	2½"		150	<i>DBA11-200</i>	<i>DBA71-200</i>
3"	4"		120	<i>DBA11-300</i>	<i>DBA71-300</i>
1½"	2"	<i>FKM</i>	210	<i>DBA12-150</i>	<i>DBA72-150</i>
2"	2½"		150	<i>DBA12-200</i>	<i>DBA72-200</i>
3"	4"		120	<i>DBA12-300</i>	<i>DBA72-300</i>
1½"	2"	<i>PTFE Encapsulated Silicone</i>	210	<i>DBA63-150</i>	<i>DBA73-150</i>
2"	2½"		150	<i>DBA63-200</i>	<i>DBA73-200</i>
3"	4"		120	<i>DBA63-300</i>	<i>DBA73-300</i>
1½"	2"	<i>EPDM</i>	210	<i>DBA64-150</i>	<i>DBA74-150</i>
2"	2½"		150	<i>DBA64-200</i>	<i>DBA74-200</i>
3"	4"		120	<i>DBA64-300</i>	<i>DBA74-300</i>
1½"	2"	<i>FFPM</i>	210	<i>DBA66-150</i>	<i>DBA76-150</i>
2"	2½"		150	<i>DBA66-200</i>	<i>DBA76-200</i>
3"	4"		120	<i>DBA66-300</i>	<i>DBA76-300</i>
1½"	2"	<i>PTFE Encapsulated FKM</i>	210	---	<i>DBA77-150</i>
2"	2½"		150	---	<i>DBA77-200</i>
3"	4"		120	---	<i>DBA77-300</i>
3"	4"	<i>FKM-B</i>	120	<i>DBA69-300</i>	---



adapter x 1½" and 2" female NPT



adapter x 3" female NPT

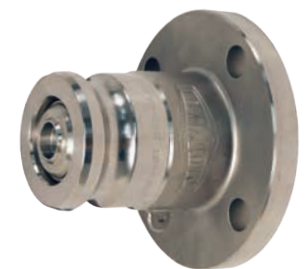
Jump Size Adapter x Female NPT

Female NPT	Adapter Size	Seal Material	Maximum PSI at 70°F (21°C)	Aluminum Part #
2"	2"	<i>Buna</i>	150	<i>DBA11-1520</i>
2"	2"	<i>FKM</i>	150	<i>DBA12-1520</i>



Adapter x 150# ASA Flange

Flange Size	Adapter Size	Seal Material	Maximum PSI at 70°F (21°C)	Stainless Steel Part #
2"	2"	<i>FKM</i>	150	<i>DBAF72-1520</i>
		<i>PTFE Encapsulated Silicone</i>		<i>DBAF73-1520</i>
		<i>EPDM</i>		<i>DBAF74-1520</i>
		<i>FFPM</i>		<i>DBAF76-1520</i>
2"	2½"	<i>FKM</i>	150	<i>DBAF72-200</i>
		<i>PTFE Encapsulated Silicone</i>		<i>DBAF73-200</i>
		<i>EPDM</i>		<i>DBAF74-200</i>
		<i>FFPM</i>		<i>DBAF76-200</i>
3"	4"	<i>FKM</i>	150	<i>DBAF72-300</i>
		<i>PTFE Encapsulated Silicone</i>		<i>DBAF73-300</i>
		<i>EPDM</i>		<i>DBAF74-300</i>
		<i>FFPM</i>		<i>DBAF76-300</i>



Note: Reference page 179 for dust caps for adapters

- For flange dimensions, diagrams and additional information please reference dixonvalve.com.